

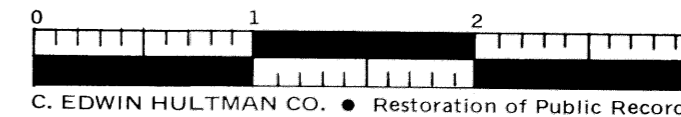
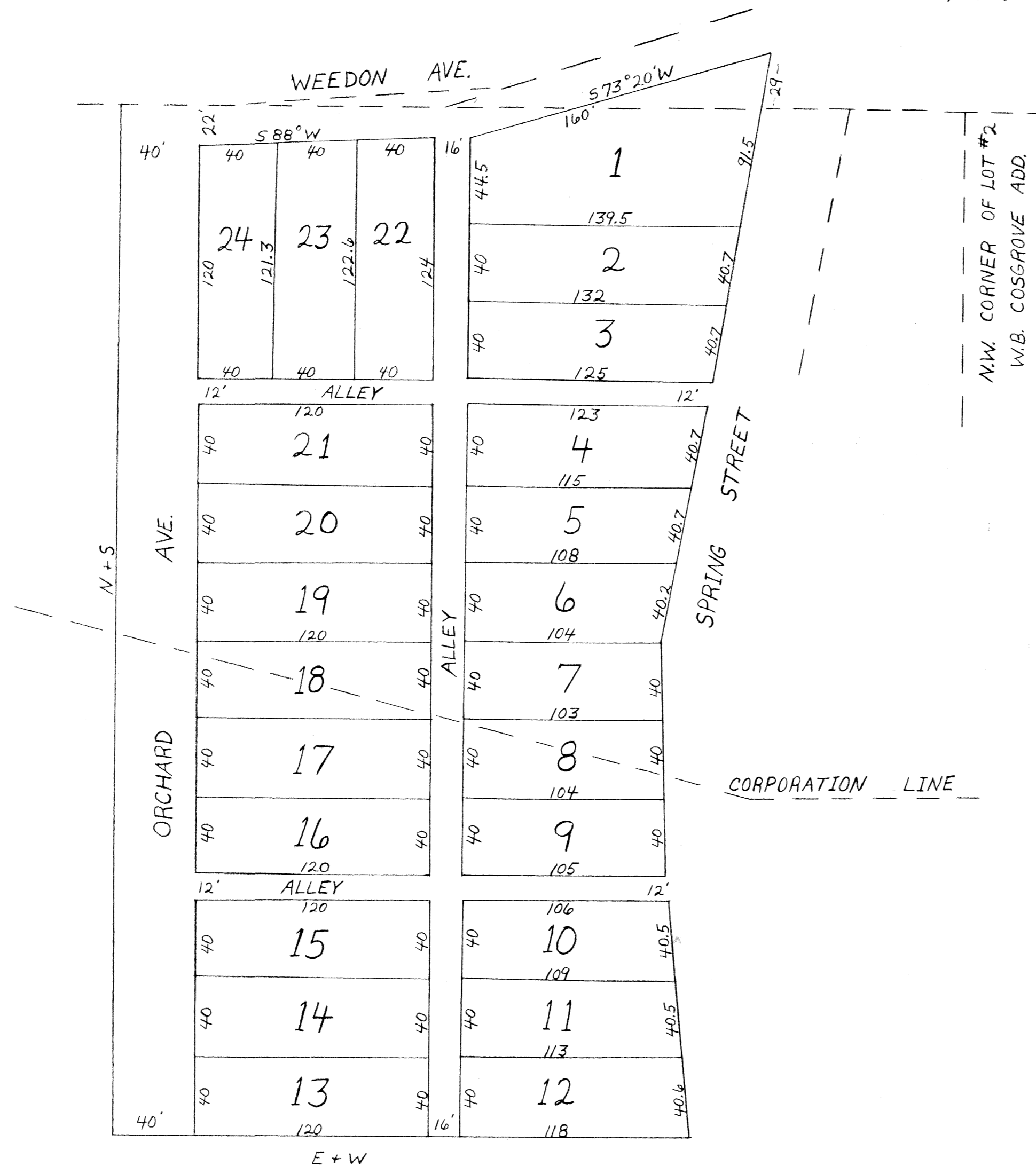
WEEDON'S ADDITION TO CAMBRIDGE

CONTAINS 3.85 ACRES

2.35 A. IN CORPORATION
1.50 A. OUT OF CORPORATION



SCALE 60' = 1"
JULY 3, 1902



WEEDON'S
ADDITION
TO CAMBRIDGE, O.

CAMBRIDGE, OHIO JULY 12, 1902

I SURVEYED THE LANDS DELINEATED ON THIS PLAT UNDER THE DIRECTION OF THE PROPRIETOR, ALFRED WEEDON AND I CERTIFY THAT THE PLAT AND THE REPRESENTATION MADE THEREON ARE CORRECT AND TRUE.

W.W. WEBSTER, SURVEYOR

KNOW ALL MEN BY THESE PRESENTS: THAT WE ALFRED WEEDON AND SARAH WEEDON THE OWNERS OF THE LANDS DELINEATED ON THIS PLAT DO HEREBY ACKNOWLEDGE THE MAKING OF THE SAME TO BE OUR FREE ACT AND DEED, AND WE DO HEREBY DEDICATE THE STREETS AND ALLEYS AND AVENUES AS SHOWN THEREON TO PUBLIC USE FOREVER AS SUCH.

IN TESTIMONY WHEREOF, WE HAVE HEREUNTO SET OUR HANDS THIS 2nd DAY OF AUGUST, 1905.

ALFRED WEEDON
SARAH WEEDON

SIGNED AND ACKNOWLEDGED IN PRESENCE OF US, J.C. CARVER, MARY H. HARTLEY
STATE OF OHIO, GUERNSEY CO. SS:

BEFORE ME A NOTARY PUBLIC IN AND FOR SAID COUNTY, PERSONALLY APPEARED THE ABOVE NAMED ALFRED WEEDON AND SARAH WEEDON WHO ACKNOWLEDGED THAT THEY DID SIGN THE FOREGOING INSTRUMENT, AND THAT THE SAME IS THEIR FREE ACT AND DEED.

IN TESTIMONY WHEREOF, I HAVE HEREUNTO SET MY HAND AND OFFICIAL SEAL AT CAMBRIDGE, O. THIS 2 DAY OF AUGUST, 1905.

(SEAL) J.C. CARVER, NOTARY PUBLIC

TRANSFERRED WHAT IS IN CORPORATION DEC. 4, 1905 DAN R. WALLACE- AUD.

FILED DEC. 4, 1905 RECORDED DEC. 21, 1905 AT 3:50 P.M.

ATTEST F.P. ARNOLD, RECORDER